

This Newsletter is available on the EVA [Website](#) and [Facebook](#) page.

EMERALD VILLAGE ASSOCIATION - WHO WE ARE

Residents often ask, 'What does the Emerald Village Association do?'

In an attempt to answer this question, it is important to stress that the Association is a group of interested, community minded citizens trying to make a difference to the Emerald Village and contributing for it to be healthy, connected, and resilient.

The committee has written a Business Plan to align its values and direction, as well outlining Actions and Priorities.

The Objectives of the Committee are:

1. Strive to be the voice of Emerald, by representing and liaising with local groups and individuals so that matters of public interest can be identified and evaluated
2. Liaise with the Cardinia Shire Council and others on matters of public interest
3. Identify the unique strengths of the Emerald village community to build proposals from those strengths
4. Provide a conduit for all local organisations and community members to the Cardinia Shire Council, its CEO, Ward Councillors, staff, and representatives
5. Build and maintain a network of local community groups
6. Develop an annual business plan which clearly identifies objectives that EVA Inc. aims to achieve, and
7. Promote specific community projects which will enhance the sustainability of Emerald village and the wellbeing of the community.

The Business Plan contents are to inform member and interested persons, and its contents are:

1. Introduction
2. Background
3. Vision
4. Mission
5. Values and Code of Behaviour
6. Governance Structure
7. Finances
8. Strategies
9. Actions

Readers might be interested in the Governance Structure and the EVA's Strategies and Actions. The Governance Structure is that:

The Association annually elects a committee from its members. The Committee currently comprises **twelve (12)** persons with the following elected office bearers:

President
Vice-President
Secretary, Treasurer and 8 members

The EVA has the following working sub-committees working.

1. **The Planning Sub-Committee** to deal with details of the various Community Issues, Key Objectives or ad-hoc matters of relevance and report findings to the EV Committee for a decision.
(refer to the Terms of Reference approved 25 May 2022)
2. **The Awards Sub-Committee** to select Awards for:
 - a. the Emerald Citizen of the Year
 - b. the Young Citizen of the year
 - c. the Emerald Local Group of the Year.
3. **Communications Committee**
4. **Community Well-Being Committee**

The EVA representatives on other Bodies are:

1. **The Hills Hub Management and Strategic Planning Committee.**
2. **The Emerald Emergency Committee Representative**
3. **The Emerald Lake Representative**

(The EVA Inc. Committee will establish terms of reference for each of the sub-committees, outlining the scope of the delegation and the frequency for reporting back to the Committee.)

It should be noted that the EVA allows all members to attend meetings and add value by outlining matters of interest that should be considered by the Association.

The Committee has established an Action Plan for each of these Objectives and regularly monitors these to ensure that it maintains its momentum and enthusiasm.

Action Plans for each of these activities will be continued in the November edition of the EVA Inc. newsletter.

Claude Cullino - EVA Committee

FROM THE PRESIDENT

We have a number of major projects and events happening in Emerald at the moment. Hopefully, this newsletter keeps you informed and up to date with local issues.

The community consultation has been completed on the plan for the future of the Emerald Lake Park. 333 responses were received which is very encouraging. One of our objectives is to increase the community's

engagement in future projects which we believe will achieve better outcomes.

The EVA Inc. has made a submission to Council re the Emerald Lake Park master plan and this update will be included in next month's Newsletter.

Please note that we have our annual community night coming up on Wednesday October 26th in the Hills Hub Hall (yes there is a large hall in the Hills Hub). Community groups are given an opportunity to promote their group and Mayor Jeff Springfield will present the 2022 Citizenship awards. All members of our community are most welcome.

Currently we are assessing interest in establishing a Park Run on Saturday mornings at 8am at the Emerald Lake Park. Email me and spread the word with runners, joggers and walkers. Information on the Park Run is included in this newsletter.

Many thanks to our sponsors who help fund the EVA Inc. newsletter and to our editor Peter Maloney who puts it all together. We are currently reaching over 3000 local residents.

Dick Bartley - President EVA


EMERALD CITIZEN OF YEAR AWARD NIGHT

ROTARY CLUB OF EMERALD & DISTRICT

Life is never dull if you are a Rotarian and don't let it not be said that Rotarians don't get their hands dirty! On hearing about a problem that could affect the efficient running of Puffing Billy, 18 Emerald & Belgrave Rotarians stepped in to assist Puffing Billy Railway who had received 60 tonnes of dirty coal. This meant that manual intervention was needed to remove rock and slate from the remaining 20 tonnes and on the public holiday (for Queen Elizabeth II's passing) 3 hours of hard labour was put in by our members - providing them with "a good work out" – no doubt a few sore joints for days afterwards though.

This month the Club reached a milestone with one of our members, - Russ Nielsen, celebrating 40 years membership, joining on 1st September 1982. Russ was President in 1992/93, holds multiple Paul Harris Fellowship Awards and actively assisted in the launching of our key events such as The Kids Fun Run with Thomas, All American Car Display and Mancave Alley, The Debutante Ball and Cocktails on the Catwalk. Other projects he was a significant contributor with include Rotary's Centennial Project's Emerald Time Square and the ANZAC walk. Russ was a deserving award recipient of the Emerald Village Association Citizen of the Year in 2017.

On Tuesday 20th September the SES opened its doors to Emerald Rotary, providing our members with a viewing of their new facilities. Following the Storms that hit the Dandenong Ranges on 9th June 2021, Rotary's fundraising arm (RAWCS) raised funds to assist those affected. They were able to raise funds to the Emerald SES for the purchase of a large Chainsaw, 4 Milwaukee torches & batteries and 2 Power towers. Additional funds have been allocated and once the SES has recruited new members this money will allow for their training.



Notice of
2022 CITIZEN OF THE YEAR AWARDS
Showcasing Local Community Organisations

AT THE HILLS HUB, EMERALD
ON WEDNESDAY 26TH OCTOBER
ARRIVE at 7.00PM
To Commence at 7.15PM for-

1. REPRESENTATIVES FROM LOCAL NOT-FOR- PROFIT ORGANISATIONS SHARE THEIR VISION & THEIR CURRENT FOCUS
2. PRESENTATION OF CITIZENSHIP AWARDS
by Mayor Jeff Springfield
3. A light supper will be provided to encourage networking

Community Groups RSVP to dickbartley08@gmail.com
Community Members RSVP to evasecretary3782@gmail.com

Sponsored by Emerald Village Association Inc



Last month we reported on successfully running the 6th Primary School Speech contest after missing the last 2 years through the impact of COVID. Below is a photo of the students, including the successful students: 1st – Tom Ferrier from Macclesfield PS, 2nd – Poppy

Sanderson from Selby PS and 3rd – Matilda Child from Gembrook PS.



For those of you who would like to be involved in the Community, be it to give back or just get to know more people locally you are always welcome to come along to either an event or meeting to see what we do – contact us and we would be happy to welcome you. Phone 0408 769 491.

Shalini Penny - Publicity

WOOLWORTHS - A FRESH LOOK



New look Woolworths offers Emerald locals the ultimate in convenience

Local shoppers in Emerald now have access to a fresh, new-look supermarket with the completion of the Woolworths Emerald store renewal this week. Customers can experience a new look fruit and vegetable section and organic produce selection, as well as an upgraded continental style deli and increased seafood offering.

“We’re pleased to be able to offer a convenient new look, full range supermarket for our customers, giving local shoppers a better shopping experience and providing all their grocery and fresh food needs in our updated store,” said store manager Brad Thomas.

“The new look supermarket is designed with the local customer at the forefront and we are pleased that the improvements will offer local residents a great shopping experience, enhanced fresh offerings and the convenience they are looking for,” said Mr Thomas.

The upgraded Woolworths store leads the way in futuristic convenience, allowing shoppers in the near future to use Woolworths new Scan&Go service. The service is part of a new feature in the Woolworths app, where shoppers simply link their Everyday Rewards card, and find the Scan&Go option in the ‘More’ tab.

After adding a preferred payment method, shoppers can then use the app to scan their products as they add them to their trolley or basket, then skip the queues and head straight to the dedicated Scan&Go checkout.

Seafood lovers will be delighted to choose from the freshest fish fillets, prawns, oysters and 100% Tasmanian salmon. Quality is held to an incredibly high standard in the sourcing of Woolworths seafood, with most sourced in Australian and New Zealand waters.

Weekend entertaining is made easy with the new continental deli, offering an extensive range of local and international cheeses along with everything needed for a gourmet charcuterie board.

The in-house bakery produces artisan breads, custom made cakes and a brand new range of premium stone baked breads. Their custom cake service can cater to any kind of celebration.

For busy shoppers, the Direct to Boot service means that you can shop from the comfort of your own home, removing the need to come into the store or wait for delivery services. The service will be relocated to the outside car park prior to Christmas and will allow online shoppers to select a pickup time convenient to them and park in one of the four new designated parking spaces. A Woolworths team member will then place the order into their boot.

The new look store is open from 7am to 10pm daily and is located at 383 - 385 Belgrave-Gembrook Rd, Emerald.

The EVA Inc. thanks Woolworths for joining the ranks of our Sponsors who financially support our organisation.

EMERALD U3A

Happy Spring-time to all! They say Spring is the time of plans and projects, and we are busy lining up several new courses for next year. We hope that some of these will be finalised before Enrolment Day for next year – Tuesday 6th Dec. Assisted enrolment will be available at the Hills Hub for those requiring assistance, from 10.00am on the same day, in conjunction with a Christmas-themed morning tea!

The Hub now has a Hearing Loop to assist those with hearing loss. It connects directly with a hearing aid or cochlear implant. The Loop is portable so can be taken to whichever room is required. It will be available for use once council staff have been trained.

Lastly, we have another U3A member & Art tutor Iain Johnson, exhibiting his 'Impressions of the Australian Landscape' in the Hub Art Space until 21st October.



Heather Bishop - U3A Publicity

WHERE AM I?

We were last month on the Clematis Park Rd taking in the view of the Cardinia Dam. Thanks to everyone who responded including the two who have actually painted this scene.



This month we are south of the Emerald township. What is the road that this photo was taken on? Contact Dick Bartley dickbartley08@gmail.com for responses and remember the winner receives a \$15 voucher from the Laughing Fox.

Dick Bartley - President EVA

FRIENDS OF EMERALD LAKE PARK

"Trees for Weeds Swap" was very well supported and many plants were exchanged for bags of weeds. Discussions and information were very useful.

Weed buster Week activity with Emerald P.S. Grade Four students were a great success with huge piles of weeds removed and 150 plants planted. Well done.

Come and join the **Sycamore Blitz** removing Sycamore-maple seedlings from bushland during October.

Dates: October 1st, 9th and 20th. **Time:** 9 -1am

Meet: Lakeside car park and follow the signs. BYO gloves.

Sheila Hampson - President



EMERALD STARBUSH COMMUNITY PARTNERSHIP PROJECT

Emerald Starbush, one of the rarest plants in Cardinia Shire, found predominantly in the Emerald area, comes into flower during October and November.

Surveys are currently underway in some areas counting numbers of this endangered plant. Blue stakes may be seen on roadsides and public land acknowledging their presence and to protect them from mowers. Don't remove it.

For more information check out the website – www.emeraldstarbush.com

Report new sightings – info@emeraldstarbush.com or r.jones@cardinia.vic.gov.au.

EMERALD MEN'S SHED

Local primary school students are benefiting from new outdoor learning spaces created by Emerald Men's Shed.

During 2022, the Men's Shed has built tables and benches and installed them in the grounds of Emerald Primary School, Menzies Creek Primary School and Macclesfield Primary School. The outdoor work spaces allow students to learn in the fresh air and can also be used during breaks.

Men's Shed President, Alan Bennett said the voluntary work of Shed members had been supported by funds

from Emerald Rotary Club and the schools themselves, and local resident, Tom Algra.



Caption (from left to right)
Men's Shed vice-president, Bob Blake, Menzies Creek Primary School Principal Andrew Bagnall and Alan Bennett sitting on the newly-installed outdoor furniture at Macclesfield Primary School.

“Thanks to the support of locals in buying items we make and donating timber and other goods that we can re-purpose, we can take on community projects such as the schools’ outdoor furniture,” he said.

The Men’s Shed which is based at the Hills Hub, Emerald operates four days a week and donations of timber and materials can be arranged by calling 0490 851 835.

Tom Connolly - Men’s Shed Committee

EVA UPDATE - SEPTEMBER MEETING

Lots of things happening in our Town and surrounds as the month’s roll on. Here are a few:

Our mayor and local Councillor Jeff Springfield came along and gave us a Council Report, at our meeting, which detailed lots of planning and actions.

The Worrell Reserve Skatepark design work is currently being undertaken along with plans for the Pepi’s Land small playground also.

The Cockatoo Reserve is having a new toilet block and two new tennis courts built and new lights are being investigated for the Emerald Tennis Club. Some money is available this Budget and another application is in train for further funding.

The Eastern Dandenong Ranges Trail is being extended to Menzies Creek and the Shire of Yarra Ranges Border. It is hoped it will be extended to Belgrave. What a terrific resource for walkers and riders. “Cog Bicycles” can be ordered and picked up from the Paradise Valley Hotel for a big ride!

Submissions for the Emerald Lake Park Precinct Plan have closed and work is underway to complete a plan which will have a 10 year capital works budget. It will be designated a Regional Park. The EVA Inc. has

offered to lobby on residents’ behalf for external funding and to continue to provide community input.

Shelley Beardshaw - EVA Committee

VIC ELECTIONS - MEET THE CANDIDATES

Come meet your Monbulk candidates. Hosted by Eastern Dandenong Ranges Association.

Book on <https://www.trybooking.com/CCHJS>

Q & A Oct Business Breakfast



7am - 9am Fri 21st Oct
Hills Hub in Emerald

Meet your local State candidates for
Monbulk
Daniela De Martino (Labor)
Gareth Ward (Liberal)

Raise your issues! - What will be most effective and make the biggest impact on your business & on our community

<https://www.trybooking.com/CCHJS>

CARDINIA COUNCIL NEWS

Hills Hub

Did you know, the Hills Hub has a 30kW solar energy system? Although the Council has commenced a 100% renewable energy contract in July 2022, the solar energy system has produced approximately 36,000 kWh of electricity over the past year. This helps to increase the proportion of renewable energy in the grid and has saved approximately 35 tonnes of greenhouse gas emissions - the equivalent of 9 petrol vehicles emissions over 1 year!



Birds-eye view of the Hills Hub complex and Worrell Reserve.

At the Hills Hub, Campbell Page have been a long-term user of our consultation suite. Campbell Page is a not-for-profit organisation delivering a range

of employment, community and commercial services. Their free Disability Employment Service can help you with all aspects of finding and keeping a job. Don't let an injury, illness, health condition, mental health condition or disability get in the way of finding work.



You can pop in and visit them during the hub opening hours, arrange an appointment on 1300 139 920 or visit campbellpage.org.au

The Hills Hub continues to be a bustling building with a wide range of user groups and hirers. We have flexible multipurpose spaces and smaller intimate meeting rooms available for hire. If you are interested in hiring a room or space at the Hills Hub, please call in and visit us 10am - 1pm, Monday to Friday or see the website www.cardinia.vic.gov.au/hillshubhire.

In the Art and Performance space we have a delightful exhibition '**Impressions of the Australian Landscape**' by local artist Iain Johnson. The exhibition features a series of works created during his recent trip to Arnhem Land as well as other unique Australian landscapes. The exhibition is available to see until Friday 21 October.



Over the upcoming Melbourne Cup Weekend the hub will host Emerald Arts Society's Annual Art Exhibition. This wonderful exhibition will showcase a variety of mediums, so there is something for everyone to enjoy! Come and immerse yourself in the amazing talents of the local Emerald community. Open from 10am – 4pm, Friday 28 October to Tuesday 1 November.



2022 Annual Art Exhibition

28th Oct - 1st Nov

Over \$4000 in Prizes!

New venue: Hills Hub, Emerald

Entries close
Friday 14th October
Delivery of Artworks
Thursday 27th October 10am to 1pm
Official Opening
Friday 28th October 7.30pm
Art Show Dates
Saturday to Tuesday 29th Oct to 1st Nov 10am to 4pm
Collection of Artworks
Tuesday 1st November 4pm to 6pm



Major Sponsor: The Shire of Cardinia

ADULT MEMBERS
\$1000 FIRST PRIZE for Best Artwork
+ Seven (7) prizes awarded to the best artwork in each of the following categories:

- Oils/Acrylics
- Watercolour
- Drawing
- Photography
- Printmaking
- Pastels
- Other Media

JUNE BARNETT
Still Life Prize - \$500
Donated by the Dudley Family
Awarded to the Best Still Life in any medium



NEXTGEN (under 20 years of age)
\$500 FIRST PRIZE for Best Artwork
+ Three (3) prizes awarded to the best artwork in each of the following categories:

- Under 20
- Under 15
- Under 10

Australia Day Award Nominations

Show your appreciation by nominating the person or event for an Australia Day Award! Do you know a citizen, young citizen or senior citizen who makes a big contribution to our community? Or maybe you know of a fantastic local event that deserves recognition? This is your chance to nominate someone who makes an important contribution to our local community or a community group who held an outstanding event onsite or virtually between 1 November 2021 and 1 November 2022 that deserves recognition. Nominations close Sunday 13 November. To nominate visit: https://www.cardinia.vic.gov.au/australia_day_awards

Hannah Milne - Shire Community Development Facilitator

EMERALD MUSEUM 2023 CALENDAR

Available at the Emerald Village Newsagency - \$10



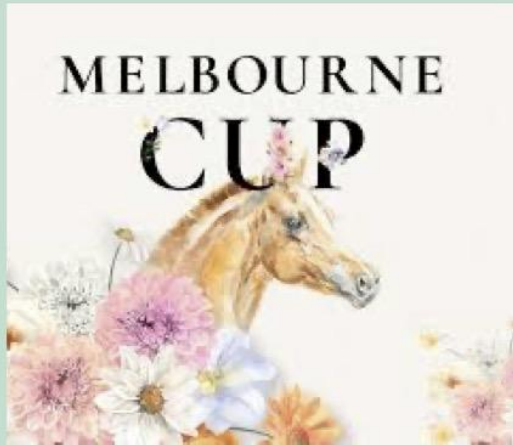
Emerald of Yesteryear
CALENDAR 2023
Emerald and District Museum



MELBOURNE CUP DAY AT THE RSL

MELBOURNE CUP DAY

1pm at the Emerald RSL
3 Memorial Avenue
Emerald



Meet the winner of the John Shaw Nielsen Poetry Award and the W.B. Yeats Poetry Prize (Melb)

Other Events:

Tech Time

Free help with computers and devices.

Drop in on Tuesdays, 2pm – 3pm



If you are interested in our events or want to know more about our upcoming programs, please visit our official Casey Cardinia Libraries website at ccl.vic.gov.au

Jessica Nichols - Team Leader

EMERALD LIBRARY - OCTOBER OFFERINGS

As the month of October kicks off, Emerald library has some great free events that we would love to share with you!

For the Little Ones:

Baby Rhyme Time (Ages 0-1): Mondays, 11:15am – 11:45am

Tinies Time (Ages 1 – 3): Fridays, 11:15am – 11:45am

Storytime (Ages 3 – 5): Thursdays, 11:15am - 12:00pm

For Kids:

Code Club – Python (Ages 8 – 14) Fridays, 4pm – 5pm

(This program runs from the 7th of October – 25th of November)

Join us as we learn about how to make games and animations with the Python Coding Language.

Explorers (Ages 5+) Thursday 27th of October, 4pm – 5pm

Enjoy our school club filled to the brim with activities, books, crafts and much more

Poet Rob Wallis in Conversation with Maria Millers : Saturday 22nd of October, 1pm – 2pm

GEMCO PLAYERS

“Come Back For Light Refreshments After the Service”

A play by Julie Day.

October 7th to 23rd - Matinee 3pm and evening shows 8pm.

See gemcoplayers.org for details and Bookings.

Supper and a Show.

Humorous, poignant and delicious.

Winner of Award for Excellence at the Edinburgh Fringe.

“Come Back For Light Refreshments after the Service”, written by local Hills writer and performer Julie Day, is a touching, humorous, charming and very real observed study of the attitudes, expectations and aspirations of four generations of women in the 1980's. Beth has nursed her Alzheimer's stricken father for five years. He has now passed away and Beth plans to sell the house and go back-packing. Her plans are met with a variety of opinions from disapproval to delight. As in reality, the theatre of life unfolds, problems are shared, truth is told and laughter unites as the four women work together and chat in the kitchen preparing “light refreshments” for the guests after the funeral service. Real sandwiches, cakes, scones, hot snacks, tea and

coffee are served to the audience as they become the mourners visiting after the funeral.

This play about relationships and understanding, the role and value of the carers in our society and the camaraderie of women garnered rave reviews and a Fringe Award for Excellence at the Edinburgh Fringe Festival.

Also coming up at Gemco - Auditions for ' are on the 6th and 10th of November at the Gem 19 Kilvington Drive, please go to the website for details.

Mandy McGarrigle - Gemco

EMERALD GARDEN CLUB

Members of the Emerald Garden Club will be holding a Plant Sale on 29th October from 9.30am-2pm at the grassed area next to the CBA Bank, Main Rd Emerald.

There will be many and varied plants at very reasonable prices. Come along and pick up a bargain. Emerald Garden Club has been operating in Emerald since November 1960 and is possibly one of the longest running community clubs in town.

Meetings are held on the 2nd Thursday of each month at 7.30pm. in the Arts Society Hall Church St.

There is an invited speaker, a "bench" of flowers, shrubs and fruit and vegetables, run on the lines of the Royal Horticultural Society. There is also delicious supper. We have frequent outings, working bees etc.

New members are very welcome, come and try us out. Find us on Facebook or meet us at the Plant Sale.



Norma Pugh - Emerald Garden Club

COME SIT BY ME - AN EVA Inc. PROJECT

Feel like an uplifting end to 2022?

Emerald's Come Sit By Me Project - What is it exactly?

Well, you know some of the things that kept you going through the last two years, kept your spirits up and enjoying life in whatever way, despite the world around you looking rather grim.

Did you potter in the shed, making something with your hands? Tinker and repair stuff? Sew masks, weave, knit or crochet? Cook like a fiend? Dance in front of YouTube? Hone your musical skills? Play a sport? Update your computer skills?

Or read and discuss books (Zoom!), write to express your feelings, make, bake or plan lakes? The list is endless...

Well, we are about to work (with the support of Emerald Primary School teachers) and pass on some of these life skills and hobbies to middle school students. We will do this at an afternoon gathering session once a week at the Hub over 4 weeks starting November 10th. We are planning to meet on Thursday afternoons from 11.30 to 3pm.

Students might like to pass on some of their skills to us - digital natives as they are! Are you interested in being a tutor or a helper in a group? Joining with a wonderful group of young Emeraldians and a friendly mob of Seniors. Want more details? We need you and look forward to hearing from you.

Email us at comesitbyme2022@gmail.com (Shelley)

evasecretary3782@gmail.com (Heather)

Or phone Shelley on 0427465972.

Shelley Beardshaw - EVA Committee

Come Sit By Me WE NEED YOU!

"Come Sit By Me" is a project supported by the Emerald Village Association for seniors to share hobbies and interests with young students.

Pass on a skill or hobby to a young student, and in return learn a bit about how they pass the time!

DETAILS:

4 weeks on a Thursday afternoon

11.30am to 3.00pm

10th, 17th, 24th November and 1st of December, 2022.

*You will need a Working with Childrens Check, but we are happy to help you apply for this!

For more information please contact
Shelley at comesitbyme2022@gmail.com
Or phone 0427465972
Heather at evasecretary3782@gmail.com

Activities Suggested Include:

Card Games
Watercolour Art
Design a "Future Emerald" Minecraft
Sports Clinic at Worrell Reserve
Sewing/Knitting/Crochet
Woodwork
Bicycle Maintenance
Weaving
Cooking



PUFFING BILLY NEWS

Join Puffing Billy Railway, together with Paradise Valley Hotel, for a Twilight Train Special on Saturday 22 October as Climax locomotive No. 1694 – one of only four still operating in the world and Puffing Billy Railway's only wood-fired engine – makes its first appearance for 2022 to take guests on a steam-hauled journey from Belgrave to Clematis.

Built in 1928 by the Climax Manufacturing Company (Corry, Pennsylvania, USA) for its power rather than speed, passengers will enjoy an atmospheric ride on board a rare breed of steam locomotive that, in the mid-1850s, once carried sawn timber along steep and curvy narrow-gauge tramways to nearby railway stations. It wasn't until 1965 that the locomotive made its way to Puffing Billy Railway and following major restoration, was returned to service in 1988.



As the Climax 1694 rolls into Clematis, passengers will disembark and make their way over to another landmark of the hills since 1882, Paradise Valley Hotel, for a delicious three-course meal with magnificent sunset views to match. Take in the next two and a half hours of good food, great views, and your favourite company before preparing for the return trip, with Climax 1694's fire burning bright in the night.

Suitable for all ages and limited in spots, this is one steam train experience not to be missed. To book your train ticket, visit

<https://puffingbilly.com.au/events/climax-dinner-train/>.

To view the menu and book your dinner package with Paradise Valley Hotel, visit

<https://www.paradisevalleyhotel.com/paradise-valley-dinner-train>.

Sheena Dang - Communications Manager

ECHO - new youth program

This year ECHO Youth and Family Services began a new leadership program, where teenagers from our area identified the needs of their peers. Their research found that young people were wanting more community activities and opportunities to try new things. As a result, the leadership group is going to run six different

youth activities in Term 4. Bookings are essential and can be made online at www.echo.org.au/youth

YOUTH EVENTS TERM 4!

Fantasy/Anime Drawing Workshop
12th October @ 4-5.30pm (25 Places)

Video Game and VR
19th October @ 4-6pm (30 Places)

Baking and Cake Decorating
26th October @ 4-7pm (12 Places)

Cooking Mexican Food
2nd November @ 4-6pm (12 Places)

Mobile Phone Photography Workshop
9th November @ 4-6pm (15 Places)

HANG OUT AND CHILL
16th November @ 4-6pm (30 Places)

@ Hills Hub Emerald for youth 12 - 19 years
Visit www.echo.org.au/youth or scan the QR code to register!



EMERALD LADIES PROBUS

Winter is over and Spring is here and Emerald Ladies Probus have got plenty of interesting outings planned for the coming months. A visit to the Old Treasury Building in Melbourne to see the 'Lost Jobs' exhibition, a visit to Rone's 'Time' exhibition at the Old Ballroom in Flinders Street Station, and a garden tour with morning tea at Coombe Cottage are all on the calendar before the end of the year.

If you're a retired, or semi-retired lady, we welcome you to come along to one of our meetings to find out more about our other activities and maybe consider joining our club. Meetings are held at the Emerald RSL on the third Monday of each month (except December) at 10am. Our club is non-fundraising and purely a social outlet to have fun with like-minded people.

Our next meeting is Monday 17 October when our guest speaker will be Vicki Mustafa. Vicki works with the Arab community and she will be speaking about how Islam has affected woman's status in life. We welcome you to come along and meet our members, enjoy some morning tea, and listen to our guest speaker.

Linda McIvor

Email : ladiespce123@gmail.com



Recent visit by Ladies Probus members to the Royal Botanic Gardens, Cranbourne. Members toured the gardens on the 'Cranbourne Explorer' before having lunch in their Boon Wurrung Cafe.

EMERALD EVERGREENS - SENIOR CITIZENS

The Emerald Evergreens Senior Citizens Centre has been operating in Emerald for many years, and presently has in excess of 100 financial Members, who participate in various activities on a regular basis.

Activities include weekly Exercises, Line Dancing and Indoor Carpet Bowls (twice weekly), with a "cuppa" on offer during a break in the 2 hour activity. A 2 course lunch on Fridays is available for \$12 – special dietary requirements are catered for.

The Club also has day trips and 3 or 4 day short holidays, during the year. Annual functions e.g. Christmas Lunch, Christmas in July, and the Club's birthday lunch, all with professional entertainment provided.

The cost of these trips and functions are all subsidised by the Club. Annual Membership fee is \$10. Any Enquiries: please contact Chris Borg on 0409 142 364.

Chris Borg - Honorary Treasurer

ONYA WALLABY

EVA sponsor and long-time local crusader for renewable energy and associated projects, Peter Cook has initiated a family game called - Onyawallaby.

Have you ever 'betted on a Bettong', 'punted on a Potaroo' or 'put a wager on a Wallaby or a Wombat'?

These are all part of a brand new travel quiz and board game called 'OnyaWallaby'.

OnyaWallaby is Australian slang for travelling down under. It is a game designed to be played when camping in the great outdoors.

It was designed by former geography and history teacher Peter Cook as a Lockdown project. He says it helped me stay focused.

It is an easy, fun game for anyone who has travelled around Australia because they can use their travel knowledge to their advantage. 'OnyaWallaby', is a very versatile game. It is suitable for just one person travelling alone, as couples or in groups.

Peter Cook hopes that 'OnyaWallaby' will become popular like other Aussie games like Squatter. Players can learn about their country, their history and their wildlife. It will be available from November 6. More information in our next Newsletter. Watch this space.

Peter Cook - DREAA

EMERALD RSL - BLUES NIGHT



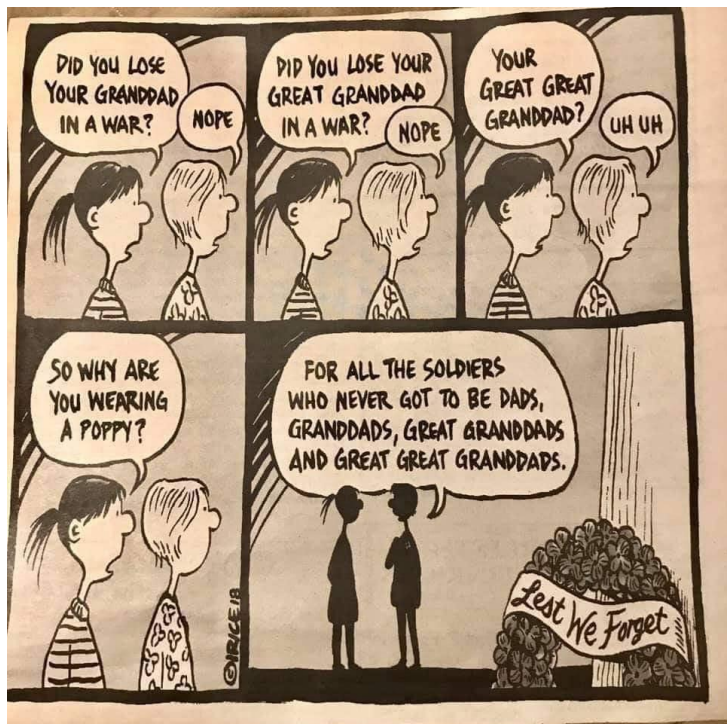
REMEMBRANCE DAY

The Emerald RSL will hold the annual Remembrance Day service at 11am on 11th November 2022 in the town centre around the cenotaph.

This year all residents will be invited back to Anzac Place where the Club will unveil the seven new plaques to honour all Australians who fought in - Korea, Malaya, Vietnam, East Timor, Afghanistan, Iraq and all Peacekeepers who served in a variety of theatres since WW2.

Peter Maloney - President Emerald RSL

This is another reason why I wear a poppy on Remembrance Day.



GEMCO - MURDER MYSTERY

Gemco Players Presents
OFF THE RAILS
“The Party”
Join the Swanston family
and celebrate Billie's birthday
Interactive Murder Mystery
set in the 1920's
Dress to the era and become
a part of the performance.
Saturday 5th November 2022
Richmond Library Theatrette
2/415 Church Street Richmond 3121
Matinee 2pm | Evening Show 7pm
(Duration approx 2 Hours)
Cost: \$15.00 per head
(No Children's Concession)
Feel free to bring your own nibbles
(No Alcohol Permitted)
Booking via www.trybooking.com

EMERALD UNDER 19'S - PREMIERS

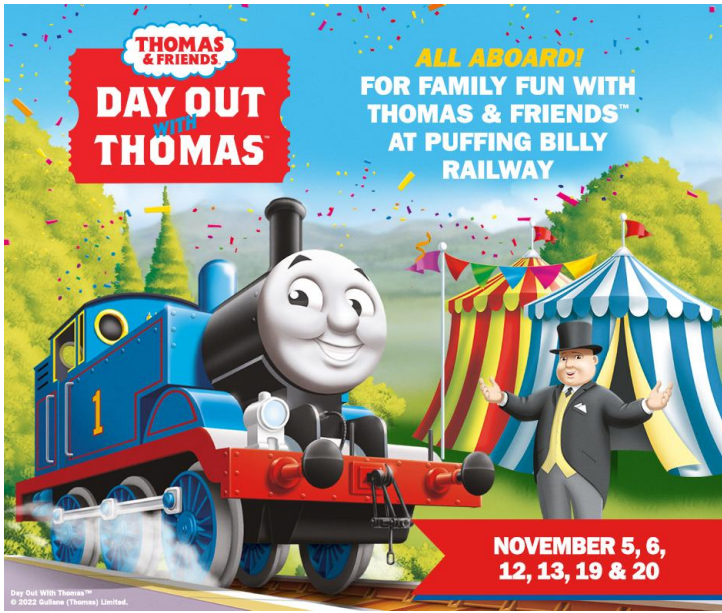


GEMCO - CELTIC MUSIC NIGHT

GEMCO THEATRE
presents
Réiltín
Collective **BOOK NOW**
ONE NIGHT ONLY
GREG HUNT MARIA FORDE JULES VINES
AN EVENING OF FINE CELTIC MUSIC &
CRAICING ENTERTAINMENT
with special guest
IAN BLAND
DOORS OPEN 7.30PM
FRIDAY 18th NOV \$25.00
Tix @ trybooking.com/CDETZ
FUNDRAISER FOR “SUPPORT ACT”
GEMCO THEATRE - 19 Kilvington Drive, EMERALD

THOMAS THE TANK KIDS FUN RUN

Back in town. This annual event is run by the Rotary Club of Emerald. It is a massive fund raiser for the community and very popular with kids of all ages.



YOUR NEWSLETTER

Available at Woolies, Ritchies, the Emerald Newsagency, Auto Plus, Post Office & elsewhere.



Emerald many years ago. Now Emerald Village Meats.

EMERALD ARTS SOCIETY & EMERALD ROTARY

PRESENT

Rotary 

EMERALD ARTS Society

Emerald & District Rotary & The Emerald Arts Society

PRESENTS BRUSHSTROKE & BUBBLES

Please join us on Friday 18th November @ 6.30PM for an evening of Art, Wine, Fellowship and Fun!

Tickets \$50 includes a Professional Art lesson, a 12x16 Canvas to take home, Art Supplies, Beverages, a delicious cheese board and a great time!

Tickets available www.trybooking.com/CCSSI
Emerald Arts Society cnr Church & Anne Street Emerald



CARDINIA SHIRE COUNCIL



The EVA acknowledges the financial support of the Cardinia Shire Council in making the publication of this Newsletter possible.

FEEDBACK

Dick Bartley - dickbartley08@gmail.com
Peter Maloney - evanews3782@gmail.com (Editor)
Holley Adams - salve5858@gmail.com

READ THIS NEWSLETTER ON OUR WEBSITE
EMERALDVILLAGENEWS.COM.AU