

EMERALD VILLAGE ASSOCIATION INC. AND COMMUNITY GROUP NEWS

EMERALD VILLAGE ASSOCIATION PRESENTS

CONNECTING TO YOUR COMMUNITY

Panel Members...

-  **Belinda Young**
Founder of Mums
of the Hills
-  **Leanne Johnson**
Community Safety
Co-ordinator
-  **Emma Firth,
Annmarie Saffin &
Cathy Swan**
Cardinia Council-
Maternal & Child
Health Services +
Youth and
Family Services
-  **Nicole Lane**
ECHO Youth and
Family Services
-  **Harriet Shing**
Representing the
State Government

Are you new to Emerald & surrounds? Or are you looking for new connections? Feel like you don't know who to reach out to and ask questions?

Come along to our "Connecting to your Community" evening to hear from our panel and begin to build connections with your local community.



COME JOIN US:

When: 7.30pm Wednesday 23rd August

Where: The Hills Hub in Emerald

CONTACT:

Shelley Beardshaw - 0427 465 972

From the President

Recently, a strategic plan for the Emerald Lake Park was developed by the Shire of Cardinia. One of the proposals was to remove the wading pool and replace it with a water feature similar to what they have at Seville but smaller.

Many of you would drive past the picture on the front of Woolworths which depicts that the Lake was a popular swimming venue. They even had a life saving club. The Shire have agreed to clean the wading pool and keep it open for the next two summer seasons.

Given it is a facility which we have had for many years, what do you think about Council plans for its removal? Some folks expressed the view that we should maintain the Lake as a swimming facility and even enhance the area with a drop in sand area similar to the beach area at Lysterfield Lake.

Please note our front page notice of the program for our next EVA sponsored Community Meeting. Shelley Beardshaw has organised a number of speakers who will have plenty of information to help you.

The EVA and other groups in Emerald have argued for all local residents to have free and easy access to the Emerald Lake. You can apply to the Shire for a free pass. More information inside.

If you identify a maintenance problem in the Shire remember you can go to the Cardinia Shire website and log your concern. Our understanding is that your issue will be recorded, given a number and a reply from the relevant department of the Shire.

Where Are We in Emerald ?

Last month we were not flooded with answers re the Emerald Star Bush. According to research it is located in a few places around Emerald - behind the Evergreens building, the RSL, Hogans Park and behind the Secondary College.

Given the recent announcement about the ending



of gas connections in new dwellings, obviously solar panels and batteries will become more common in the future. This month's picture is a mural in Emerald promoting the use of solar.

First person to contact me wins the Laughing Fox voucher.

Email to: dickbartley08@gmail.com

Dick Bartley - President EVA Inc.

Rotary Club of Emerald & District

Our new President Sangeeta Bajaj and the Emerald Rotary members have already thrown themselves into activities and projects for the 2023-2024 year. The 18-night marathon BBQs in conjunction with Puffing Billy's Train of Lights took place from 22 June to 8 July at the Gembrook Railway station and raised \$7000 towards Community needs. This helps kick off our monies for the new year, as fundraising is always a challenge. For those of you who missed out or enjoyed it so much that you would like to repeat the experience, the event is planned again for 2024 in the same time slot.

National Tree Day was started in 1996 and this year falls on Sunday 30 July. In keeping with a lot of our society "Environment and Sustainability" is of concern for Rotary. Vicki Van Den Bergen as Chair for this Club portfolio last year arranged that we purchase 40 trees through the ADOPT-A-TREE initiative. These are in the names of each of our members with a specific individual number allocated. The aim is to offset our Club's Tuesday meetings of 4,554.1 kg.CO2-e. New Chair Allan Douglas will look at a similar project this coming year to allow for the trees to be planted at Emerald Lake Park.



Events are being added to our year's calendar. Returning after the Winter break on Saturday 9th September is our **monthly market**. We have been advised that there are at least 20 additional stallholders who are keen to attend this market – so keep the morning free.

On Tuesday 24th October we are holding the annual **Primary Schools Speech Competition** at Emerald Primary Schools. Pupils in grades 5 and 6 from Emerald, Selby, Menzies Creek, Macclesfield, Gembrook, and Cockatoo will demonstrate how good

their public speaking skills are whilst talking for 3 minutes on their choice subject from 12 topics. Judging will be by Toastmasters and prizes will be awarded with 1st place receiving a trophy and \$60 Dymocks bookstores voucher and their school receiving a trophy, 2nd a \$40 Dymocks voucher and 3rd a \$25 Dymocks voucher.

Again, for Grade 5 & 6's we are holding a **Halloween Dance Party** on Saturday 28th October. Details for this event will be released in the coming days so keep your eyes on our web site www.emeraldrotary.org.au

The next **Kids Fun Run with Puffing Billy** is to be held at Gembrook Railway station on Sunday 26th November. The Monash Children's Hospital will again be the recipients of the funds raised and if there is a company who would like to support the next event, please contact the Club. Registrations go live on 28th August – visit our website closer to the date www.emeraldrotary.org.au

The next **Annual Rotary Club of Emerald & Dist. Debutantes Ball** is scheduled for Saturday 15th June 2024 at Cathies Lane Receptions. Registrations will go live early 2024 and information will be on our website.

When you are next in town checkout our notice board which is positioned down the side wall of the IGA. This is updated regularly to ensure that information on forthcoming events is provided.



We would love you to join us at either an event or our weekly meeting. To find out more please call 0408 769 491 or 0417 038 707.

Shalini Penny, Publicity

EVA July Meeting Report

Planning - Asset Management

At our July meeting, Ash Tomkins, Senior Asset Management Specialist and Misty Johannsen, Manager Infrastructure, Cardinia Council explained the challenges and approaches to managing community assets, needs and services in a time of severe budgetary constraints.

52% of the Council's Budget is earmarked for roads; 21% towards Council buildings; and the next biggest allocation at 12% is for recreation, leisure and community facilities. Parks, open spaces & streetscapes, and plant machinery & equipment take 3% each.

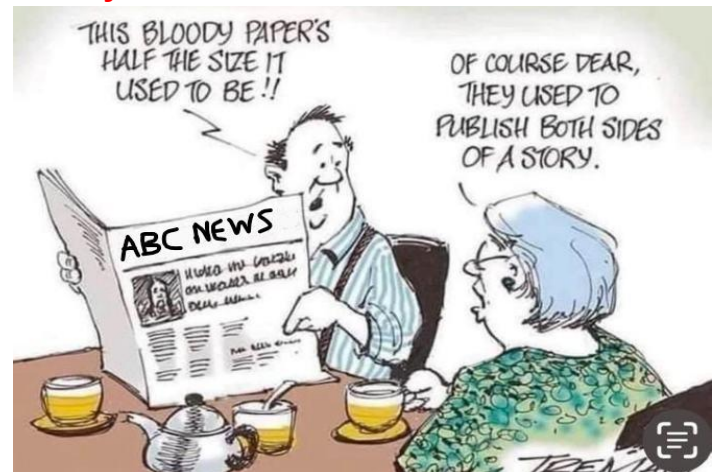
They encouraged everyone to have input to decisions made around budgets through <https://creating.cardinia.vic.gov.au/> and information on the "Sealing the Hills" with details of roads still contracted to be sealed and those not, can be found at: https://www.cardinia.vic.gov.au/info/20006/roads_trees_and_major_projects/739/sealing_the_hills_-_road_sealing_project

Some other areas of interest that were discussed in the meeting included Emergency Planning, support for a Community Recycling Project, closer collaboration with EDRA, the slippery and uneven brick paving in parts of the Kilvington Drive Shopping Precinct and finally and importantly, thanks to sponsors for the provision of a new printer for our newsletter!

The Planning Committee's report included the Worrell Reserve Skate Park Project progress (concept plans have been agreed to; detailed drawings and a planning application are proceeding to Tender) and a developing collaboration with the Emerald Secondary School Council to give us a Student Representative attending EVA Meetings! What a fantastic way for the voice of younger members of our Community to be heard in decisions that affect the Community that they and we live in.

It was an interesting evening canvassing a wide range of important matters keeping Emerald the vibrant place to live that it is...

Shelley Beardshaw - EVA Committee



GEMCO - presents

Gemco Players is looking forward to holding yet another friendly festival in our theatre The Gem, and we invite you to come along and watch plays from all over Victoria.



August 19th and 20th - \$15 per session, \$35 for the whole weekend. Refer www.gemcoplayers.org

Evie Housham - Gemco

Laugh a Little - or Smile a LOT



Mount Burnett Observatory



Footy Oval Astronomy

The Mount Burnett Observatory as part of National Science Week hosts 'Footy Oval Astronomy' on Saturday the 19th of August between 7pm and 10pm. Venue to be confirmed on the linked website below.

FOR BOOKINGS AND VENUE DETAILS PLEASE GO TO OUR WEBSITE

This event has been made possible by a National Science Week grant.

<https://mbo.org.au/event/footy-oval-astronomy>

Educational and fun activities include our experienced MBO Astronomers on how to use telescopes whilst you enjoy looking at deep space objects. Our off-site team will relay discoveries from space from a dark sky location in country Victoria via Channel 31 who will broadcast the event live to free-air TV and Facebook.

Guest speakers feature delegates from the 'Monash University High Powered Rocketry Team', 'MBO NAMBO Team' and 'MBO Radio Astronomy Team'.

Be an upcoming scientist of the future and check out the great activities with the MBO 'Young Observers'.

Dance under the stars with local live band, St Emerald.

Food and refreshments will be available.

Denise Kuchmar - Mt Burnett Observatory



Emerald Ladies Probus Club

The cold winter weather hasn't put a damper on happenings at Emerald Ladies Probus Club. Lunch, movie and concert trips, coffee mornings and garden outings have kept everyone active.



Poppies are mounting up thanks to the nimble fingers of Emerald Ladies Probus Club members.

Members have also found time to pick up a crochet hook and knitting needles to create more poppies for the Emerald RSL's twice yearly street display – an initiative our club supported when it was launched in 2018.

The next activity will be the monthly general meeting where the guest speaker is our very own member, Viv Williams, who will talk of her adventures as a hot air balloon pilot.

The club is open to retired and semi-retired women and recently celebrated its 35th birthday. While many members are from this area others travel from suburbs such as Blackburn, Berwick, North Croydon and Pakenham.

Women interested in learning more are invited to come to the next meeting on Monday, August 21 from 10am at the Emerald RSL, 3 Memorial Ave, Emerald. For more information contact:

Chris Britton on 0421 338 124.



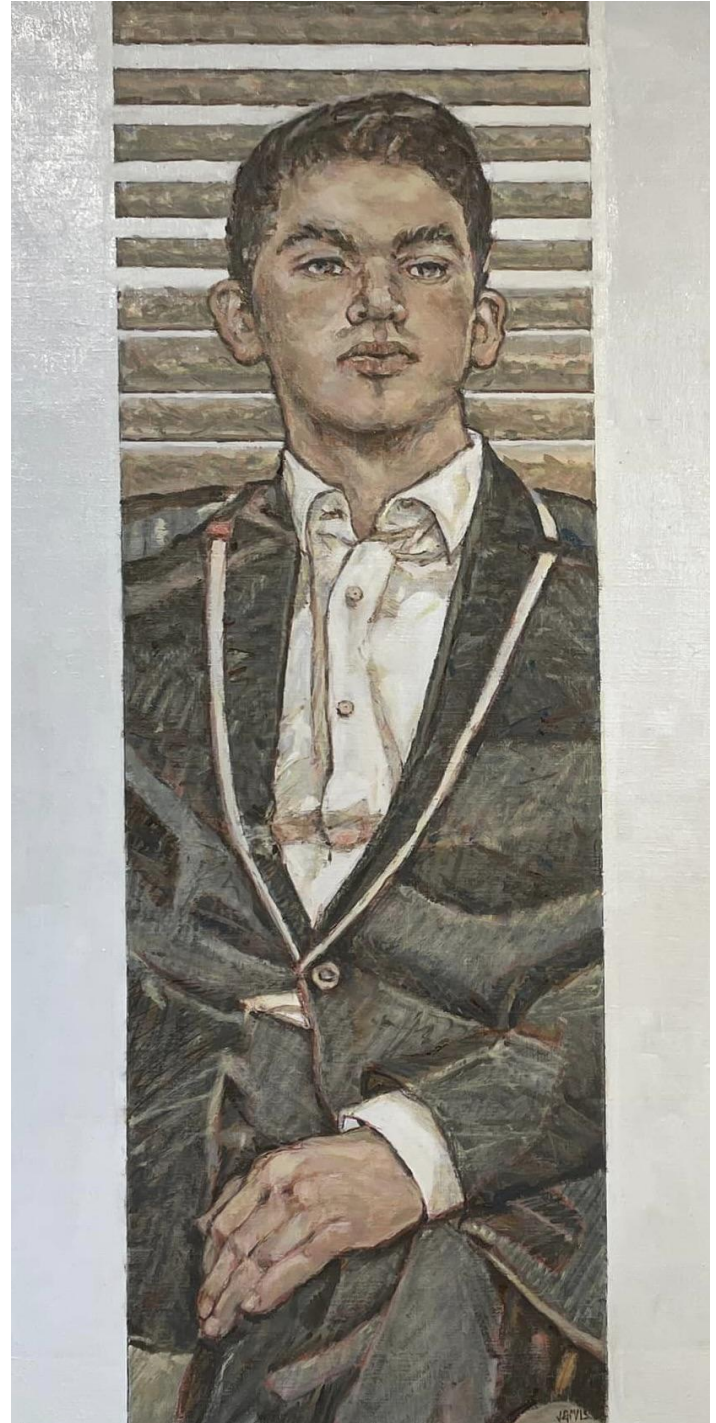
Emerald Arts Society

John Dudley Portrait Prize

A big thankyou to all the artists who entered this year's exhibition for providing us with such a wonderful display of artwork.

Congratulations, in particular, to our 9 finalists and the Prize winner Margarita Riaikkenen with her portrait titled 'Rozochka'.

Finalist - "The Grey Suit" by local artist Sue Jarvis (oils)



The exhibition will remain at the Hills Hub until 25 August, 10am to 1pm weekdays and 10am to 4pm weekends.

The Finalists and winners artworks will then be at the Cardinia Cultural Centre until the 28 September 10am to 3pm

Puffing Billy Railways - Fun Run

The Puffing Billy Running Festival is back after a short hiatus, promising an exhilarating event for all ages and skill levels. Spanning two action-packed days on the 9 and 10 of September, the festival offers four different courses, catering to seasoned runners and families alike.

Day one kicks off with the 1.2km Kids Dash and a 5km Family Fun Run/Walk on September 9 at Emerald Lake Park. The iconic Puffing Billy steam locomotive sets the stage, providing a lively atmosphere for participants.

On September 10, the main event unfolds, as up to 3,000 runners face off against two massive steam locomotives in the heart-pounding 13.5km 'Classic' Run. For those seeking an even greater challenge, the all-new 21.1km road and trail Half Marathon tests endurance amidst the scenic hills of the Eastern Dandenong Ranges.

Spectators can also join the excitement and board the iconic Puffing Billy, potentially surpassing the racing runners. The Festival's Finish Zone is hosted at the state-of-the-art Lakeside Visitor Centre in Emerald Lake Park, offering food, beverages, retail options, and the Emerald Lake Park's picturesque surroundings.



The event is supported by Puffing Billy Railway's dedicated volunteers, with proceeds going towards vital heritage railway projects. Whether you're a seasoned participant or a first-time racer, there's a course suited for everyone. Secure your spot and avoid disappointment by registering early at <https://puffingbillyrunningfestival.com.au/>.

Sheena Dang - Communications Manager

Emerald U3A

We hope everyone enjoyed our Winter Warmer at the Hub on Monday 31.

In addition to that, a group of 18 U3A members and roughly the same number of students from Emerald Secondary College were bussed down to the ABC Southbank studio to be in their Q&A audience on Monday 24 July. Check out the 'after' session with Patricia Karvelas <https://youtu.be/aQY7vxb38NU>



Nola Bianco has just started a new course *Introductory Calligraphy*, to run on Monday afternoons Weeks 2 + 4, 1:30 - 3:30 pm, so if you're quick you can get in on the ground level and be taught as a beginner needs to be.

Walking Football is returning soon after a winter hiatus.

Heather Bishop - U3A Publicity

EVA - Connecting to your Community

Reaching out in our Community- A Public Discussion

Have you ever come across a Facebook post for "Mums of the Hills", seen a flashing Trailer Noticeboard for staying safe in the coming fire season, wondered about how to access help for yourself, or young children or teenagers or the elderly; or tried to find information on connecting with Community Groups?

Perhaps you and your family have moved here during the last few years when connecting to neighbours, community organisations and groups was difficult. Or you now have a special need or time to become more connected to people and events.

The Emerald Village Association recognise that for all to continue to thrive here in Emerald and surrounds - our special setting, we need to feel able to reach out for help, seek out special friendships and relationships; find the answer to our sometimes

difficult circumstances, or feel a bond with others and an understanding of time and place

Emerald Lake Precinct Plan

Report by Vanessa Kewish of EVER

Cardinia Council has approved the ambitious Emerald Lake Precinct Plan, sparking controversy over the removal of the park's iconic pool.

Out of 58 submissions, 47 individuals strongly opposed the pool's removal, citing its historical significance and community importance since the 1930s.

The impending removal of the pool has left many disappointed, concerned about losing a cherished landmark and a space for recreation and gatherings. Calls have been made to postpone the decision to allow for more community input, as locals are not convinced that a proposed "water play space" is an adequate replacement.

Supporters of the Precinct Plan argue that the removal is necessary to make way for new attractions and improved facilities that enhance the visitor experience. Critics, however, argue that disregarding the majority's opposition neglects the pool's sentimental value. They urge the Council to find a way to preserve the pool while introducing new amenities.

Council has confirmed that the pool is slated to open this summer, and possibly the following. A request has been made for the Council to clean, paint, and refresh the pool area amidst ongoing embankment upgrades. This proposal aims to find a compromise that preserves the pool's historical significance while accommodating necessary improvements.

The transformation of Emerald Lake Park should consider the voices of residents, frequent visitors, and stakeholders. Open communication and dialogue with the community are essential to ensure that final decisions align with the majority's wishes and maintain the essence of the cherished park.

If you'd like to have your say about the pool removal, head to the EVER facebook page:

<https://www.facebook.com/EVER3782/>



Emerald Lake with wading pool - circa 1930. Woolworths front window display.

EMERALD VILLAGE ASSOCIATION PRESENTS

CONNECTING TO YOUR COMMUNITY

Panel Members...

- **Belinda Young**
Founder of Mums of the Hills
- **Leanne Johnson**
Community Safety Co-ordinator
- **Emma Firth, Annmarie Saffin & Cathy Swan**
Cardinia Council- Maternal & Child Health Services + Youth and Family Services
- **Nicole Lane**
ECHO Youth and Family Services
- **Harriet Shing**
Representing the State Government

Are you new to Emerald & surrounds? Or are you looking for new connections? Feel like you don't know who to reach out to and ask questions?

Come along to our "Connecting to your Community" evening to hear from our panel and begin to build connections with your local community.

We also need our Councils and Government to be readily accessible and to know of our concerns and issues.

Well, we are having a gathering, with a warm place and a cuppa to help you reach out. A panel of interested and interesting speakers will introduce themselves and their organisations to us for a short time and then it's your turn to ask questions if you want. Tell us your concerns and the things you need to know. Or just listen and feel connected...

When is it? 7:30 pm, Wednesday 23 August, 2023

Where is it? The Hills Hub
400a Belgrave-Gembrook Rd,
Emerald

Questions? Call Shelley 0427 465 972

Or email

evasecretary3782@gmail.com



Nicole & Rick Roberts opened C-Me Uniforms in Emerald in 2020. They were looking for a business and through their accountant discovered a home-based uniform business for sale. It turned out they knew the person selling it and recognised the opportunity for the business to expand the uniform side of the business and open a retail store.

Their store at 1/329-331 Belgrave-Gembrook Rd in Emerald not only offers a range of uniforms for different industry sectors; they also sell workwear and basic day-to-day clothing including tee-shirts and hoodies, fashion items and essential clothing like wet weather jackets. They carry a range of clothing for men, women, and children, along with footwear from some of the biggest brands around.

C-Me Uniforms has quickly become recognised for the digital & embroidery services they offer in-house providing the majority of uniforms, tees & sweatshirts for local schools, clubs, groups and businesses in the area.

Nicole & Rick take pride in the personalised service they offer customers and love bringing the customer's vision of their uniform to life. They go beyond to make sure everything is what the customer expected and guide them through the process, also providing samples of apparel for customers to look at and try on before they add the decoration to the clothing.

They love engaging with the customer and seeing all the interesting and lovely logos their customers bring to them and the smile on their faces when they pick up their uniform order.

If you haven't visited C-Me Uniforms you'll be surprised by the extensive range they carry and can look forward to lots of new and exciting brands of clothing coming to the retail side of their business.

Christmas Candle Clusters

We have been working behind the scenes to have 18 sets of large Candle Clusters made locally and to erect these in Emerald, Cockatoo & Gembrook to enhance our streetscapes & to celebrate the festive season.

Fingers crossed, we hope to have these installed and ready for the PAVED Festival.

Half Day Value Proposition Workshop

We will be very fortunate to have local award winning and author of 'BrandCode', a strategic marketing guide for small business and 'Enhance Your Reputation', Ros Weadman, run a half day Value Proposition Workshop in September.

In this half-day workshop, date to be set, businesses will

- learn the formula behind powerful value propositions that make products impossible to resist.
- create a signature value proposition that makes your brand more attractive to your ideal customer than your competitors.

What separates one business from another is value. And like beauty is in the eye of the beholder, value is a perception that resides in the mind of a customer. When you can articulate the distinct value of the solution you provide in a way that separates you from your competitors, you will connect with your target customer in a very powerful way.

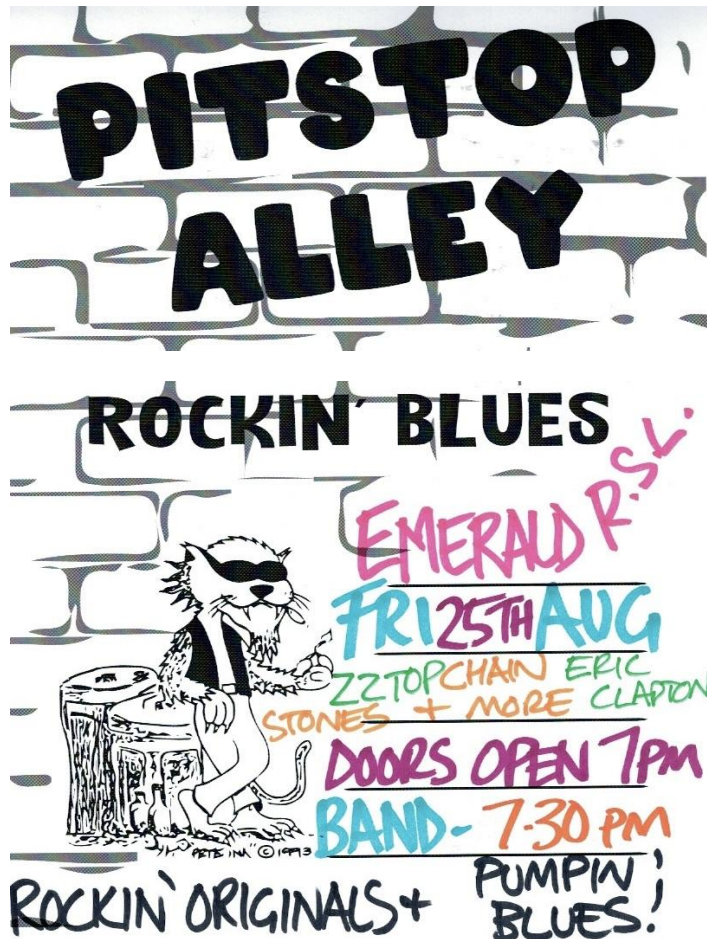
The workshop is free for EDRA members and \$50 for non-members.

The date of the workshop and location will be finalised mid August add advised in the Sept EVA News. To register your interest you can email ask@edra.org.au.



The PAVED Festival is shaping up to be a fantastic 3 day event from Nov 24 to Nov 26 showcasing our businesses, performing artists, exhibitions, activations and the region as a whole leading up to Christmas. We have received 24 Expressions of Interest from businesses in Gembrook, Cockatoo, Avonsleigh, Emerald, Clematis, Upper Beaconsfield & Belgrave.

Emerald RSL - Music Night



Emerald Lake Car Parking



All Cardinia residents can now enjoy free parking at Emerald Lake Park if their vehicle has a current annual car parking pass. You can apply [here](#). Please note, all passes expire 31 August and applications for a new pass will be required.

Please apply after 31 August for the new period commencing 1 September. If you desperately want to drive to the park, apply for a pass and it will be sent out.

https://www.cardinia.vic.gov.au/info/20036/emerald_lake_park/332/parking_and_accessibility_at_emerald_lake_park#section-2-parking-fees

Emerald Museum

Volunteers at the Emerald Museum were the fortunate recipients of a training program conducted by the Australian Museum and Galleries Association Victoria (AmaGA Victoria).

This training program was part of a state-wide AMAGA Victoria project to provide regional communities with the knowledge and skills to digitally preserve their collections. It also included onsite training in the areas of collections care, preventative conservation and risk mitigation in the face of natural disaster events. Emerald Museum was successful in applying to participate in this training program.

The program was conducted over six days and consisted of hands-on training in collections care and digitisation. This included using specialist scanning techniques and using a digital SLR camera including varied light source options. During the training program volunteers photographed small and large items from the Museum collection and learnt about the particular details that need to be captured for accurate cataloguing purposes.

The training was a huge success with very positive feedback from volunteers. The Museum has since upgraded and purchased several pieces of equipment which were recommended by the expert trainers and is planning specific working days to continue to digitise the collection. Given the number of items in the collection, this is a long-term project.

First National Real Estate Belgrave have contributed \$250.00 towards the cost of the new digitising equipment for which we are most grateful.

The Emerald Museum and Nobelius Nursery holds a wonderful range of local artefacts, photographs and written records on behalf of our community. We aim to manage and store them in keeping with professional standards of conservation to preserve them for us and future generations. The AMAGA Victoria training has helped us to do this.

The Museum which is situated in Nobelius Heritage Park is open Wednesdays 10am--3pm and Sundays 12pm-3pm. To browse the Emerald Museum collection online go to ehive.com



Emerald Museum volunteers digitising Nobelius Nursery ledger from the early 1900s

Cardinia - Update re Hub Happenings

We have lots going on at the Hills Hub this month. If you are interested in booking a space, visit www.cardinia.vic.gov.au/bookingcardiniasite

Glow Fit!

Get ready to dance the night away and get fit at the same time. Join Meagan from For The Love of Dance on Tuesday nights for this fun, energetic dance fitness class that will get your heart pumping and leave you full of nostalgia- fuelled endorphins! No prior dance experience required! The lights are off, so you can really let loose.

Learn more at fortheloveofdance.com.au



Monarch Calisthenics

Did you know Emerald has a Calisthenics Club? Monarch Calisthenics is operating out of the Hills Hub on Saturdays.

The sport of Calisthenics is uniquely Australian, and offers an unrivalled combination of dance, gymnastics, singing, acting, marching, ballet, apparatus technique and performance skills for girls, boys and women.

Performers learn skills that inspire them to take centre stage at competitions, and in life.

The benefits of Calisthenics include:

- Improves coordination, mobility and balance.
- Helps develop strength, flexibility and posture.
- Boosts self esteem and team spirit.
- Appreciation of music and rhythm.
- Creating lifelong friendships.

To learn more about joining, contact monarch.cc@outlook.com

Free Volunteer Training

Building Community with Social Media

Thursday 17 August

6.30-8.30pm (hybrid)

This session will provide an overview of the most popular social media platforms used in Australia and insights on the best way they can be used effectively. This will be most beneficial to organisations new to promoting their organisations through social media channels.

Grant Writing Workshop

Wednesday 13 September

6.30-8.30pm (hybrid)

This session is designed to provide the tools, strategies and confidence necessary for writing successful grant applications. Come along and find out what grants are available, where to find them and how to put your best foot forward in applying for them.

The John Dudley Portrait Prize

We are excited to be hosting the John Dudley Portrait Prize exhibition at the Hills Hub in August.

The annual portrait competition celebrates the life of John Dudley, a great artist, past president of the Emerald Arts Society and proud supporter of the arts. Drop into the Hub between 10am-1pm weekdays and 10am-4pm on weekends to take in this fantastic exhibition and vote for the People's Choice prize.

The Hills Photographic Society

The Hills Photographic Society was formed for local Dandenong Ranges Photographers in 2016 and we are based in the Hills Hub.

We cater for photographers of all abilities from beginners to professionals.

Genres cover all sorts of things such as portraiture, pets, gardens, birds, landscapes, travel, architecture, abstract and much, **much** more.

Activities include projects, outings, external and internally held competitions, displays (there is one in the Emerald library now), exhibitions and providing educational inputs from a range of experts on a variety of topics related to digital photography.

The club is affiliated with the Victorian Association of Photographic Societies (VAPS) which offers support and a list of judges for our competitions, if required.

Feel free to attend some of our meetings and workshops before joining to learn more about what's on offer. We meet at the Hills Hub every 2nd and 4th Thursday of the month

Membership

Family \$65 p.a.

Adults \$50 p.a.

Students/pensioners \$30 p.a.

Check out our work, or contact us

hillsphotographic@gmail.com

<https://www.hillsphotographicsociety.org.au/>

<https://www.facebook.com/groups/hillsphotographicsociety/>

Emerald Regional Beekeepers

Keeping Busy in Winter

Winter is a busy time for beekeepers, preparing for a busy Spring. Hive repairs and maintenance tasks are best done in Winter, whilst our bees are in hibernation. A hot tip from the Hive Maintenance Workshop” was to build a spare box in the Winter, just in case you need to quickly catch a swarm or extend your hive– if the bees know there’s room to grow, they are less likely to swarm in the first place.



This Winter ERBK partnered with the *Emerald Men’s Shed* for a Honeycomb Frame construction Workshop. The *Shed* was a hive of activity! Loads of new skills were learned and new friendships were formed on the night. Sincere “thanks” to the volunteers for hosting ERBK and sharing your skills and tools. Many honeycomb frames were made on the night with the help of some wooden box frames to hold things square (pre-made by the *Emerald Men’s Shed*), powered nail guns, and some jigs to get the wiring expertly tensioned to hold the comb on the frames.

Honey Mead Making was also a successful Winter workshop for ERBK members, with expert guidance, ingredients and equipment provided. Each member made a personalised batch of mead. This fermented honey drink is the world’s oldest alcoholic drink, sometimes referred to as the ‘nectar of the gods’ or ‘honey wine’. Mead origins date back centuries, enjoyed by Ethiopians, Romans, Greeks, the Vikings and also throughout Europe and Britain.

ERBK will be running a second frame making workshop for members soon, and there are plans for a Eucalypt ID day, to help beekeepers pick ideal sites for hive placement to ensure good pollen and nectar supplies for the busy bees over the Summer. New members are always welcome to join activities and the discussion at each meeting (second Tuesday of the month) at 7:30PM at the Hills Hub. Door prizes, raffles, fun and friendship all included.

Please call ERBK’s dedicated swarm phone (0491 715 840) if you require assistance with a swarm collection this

season. A member or two will arrange for the safe collection and rehoming of the bees. All our members are trained and insured. Depending on the time of day and availability, our volunteers will get to you as soon as possible. Bees are a valuable and precious part of our insect world. They pollinate flowers and provide honey as well as many other useful resources.

EVA Sponsors

The EVA is very much appreciative of the financial support provided by the 27 local businesses over the past 12 months.

With another financial year upon us our numbers of sponsors have grown to 32. The new sponsors to join our prestigious Emerald Club are:

- Flavour Bomb Asian Fusion restaurant
- Eincar automotive services
- Cellarbrations
- Emerald Wellness Pharmacy
- Emerald Pilates
- Hush Cosmetics
- Tree Range including Emerald Hire
- Fernlea Shop of Opportunities
- Emerald Family Dentist
- Lauritos Pizza restaurant

WELCOME

The EVA encourages local residents to stay on the hill and - BUY LOCAL.

Cardinia Shire Council

Report any issue to the Council that requires their attention.

Email: mail@cardinia.vic.gov.au

The EVA acknowledges the financial support of the Cardinia Shire Council in making the publication of this Newsletter possible.



FEEDBACK

Dick Bartley - dickbartley08@gmail.com

Peter Maloney - evanews3782@gmail.com
(Editor)

Holley Adams - salve5858@gmail.com

**[READ THIS NEWSLETTER ON OUR WEBSITE
EMERALDVILLAGENEWS.COM.](http://EMERALDVILLAGENEWS.COM)**

SPONSORS OF THE EVA NEWSLETTER

THE EVA APPRECIATES THEIR SUPPORT - PLEASE BUY LOCAL



8 Kilvington Drive, Emerald, VIC, 3782

Emerald Village Pharmacy is an independently operated, award winning business that has been proudly servicing the community for over 40 years.

We continue to provide support and care for our customers with the extensive range of services we provide, including vaccinations of the community for the Flu Vaccine and the COVID-19 vaccine.



Value, Service & Care from People you trust!



MONDAY is LOCALS NIGHT
2 courses \$30,
or 3 courses \$40!

SCAN FOR INFO!

BAM BAM
ITALIAN EAT IN + OUT

KIDS EAT FREE* TUESDAYS in WINTER!

*SCAN FOR INFO!



FALCONE & ADAMS
LAWYERS
INCORPORATING ARMSTRONG ROSS LAWYERS

Emerald
(03) 5968 3666

Belgrave
(03) 9754 7100

Pakenham
(03) 5941 8841

www.falconeadams.com.au

Partners with the Community



BELL REAL ESTATE



A Family Owned Business

Trust the team that gets you the results you want and knows the area and community best.

Call for a free appraisal. Add your email to our VIP list to be kept updated with the current market and be advised about off-market properties and amazing promotions. We have buyers waiting to buy your property.

5968 6222

bellrealestate.com.au 311-313 Main Street, Emerald

MINDFUL AF

MIND | BODY | PRANA

SHOP

@mindfulafemerald



OPEN HOURS

TUESDAY to FRIDAY
9AM to 4PM

SATURDAY | 9AM to 2PM

SUNDAY & MONDAY | CLOSED

📍 1A Emerald Monbulk Rd (opposite woolies)



ALEXANDER NEIL

and Associates Pty Ltd

ACCOUNTANTS & BUSINESS CONSULTANTS

Registered Tax Agent

1/333 Belgrave-Gembrook Road Emerald Vic 3782
P: 5968 6062 E: reception@alexneil.com.au

HILLS PHYSIOTHERAPY

Enabling people to live better
lives through authentic health care
1300 9 HILLS
For all your movement, pain and life
solutions

hillsphysiotherapy.bookings.pracsuite.com/



Keren Roma
B. Comm, LL.M, TEP
Solicitor

keren@klrlegal.com.au
(03) 5968 4126

398 Belgrave-Gembrook Road,
Emerald, Victoria 3782

Accredited Specialist in Wills & Estates



C Me Uniforms & Safety
Workwear, Corporate, Sports Clubs,
Hospitality, Clothing & Logo Services

Shop 1/329-331 Belgrave -
Gembrook Road Emerald Vic 3782
ABN: 81137174871

UNIFORMS & SAFETY

Nicole Roberts
0434 022 833
1300 441 959

nicole@c-me.com.au
www.c-me.com.au

TINKAR'S CORNER
Gifts & Homewares



Shop 7, 5-7 Kilvington Drive, Emerald, Vic 3782
0448 763 606 tinkarscorner@outlook.com
www.tinkarscorner.com.au



AVONSLEIGH VETERINARY CLINIC

441 Belgrave-Gembrook Road Avonsleigh Vic 3782

For appointments call: Tel: **5968 3957** (24 hours)

Dr. J. Hamilton and Associates

GROOMING SERVICES AVAILABLE

gingers
HAIR SALON

5968 4386

Shop 12/344 Belgrave- Gembrook Road, Emerald

Lauritos

Pizza • Pasta • Café

5968 6077 - 0433 317 997 Party Orders

 BarryPlant

EMERALD SALES 5968 4522

Efficient
Air

Heating & Air-Conditioning

PH: 9756 7400

www.efficientair.com.au



emerald village meats

Shop 4 Kilvington Drive Emerald 3782
Tel. 5968 5354 Fax. 5968 5354



AUTO PLUS 

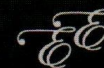
349 Belgrave Gembrook Road, Emerald
Phone (03) 5968-2641 (E) autoplusmore@gmail.com

Your locally owned and operated independent service station
"Putting the service back into Service Station"

Fuel Tyres Auto Accessories Oils Mechanical Services

24 Hour Self Service Car & Dog Wash

Open 7 Days



Emerald Eyes Optical

Creating a passion for eyewear

5968 2906

Emerald Wellness Pharmacy
Putting patients first

348 Belgrave-Gembrook Rd,
Emerald VIC 3782

Ph: (03) 5907 8706

Mon - Fri 8:30am - 8:00pm
Saturday 8:30am - 2:00pm
Sunday 9:30am - 12:30pm

Cellarbrations at Emerald

Chris & Kirsty Moloney - Management

Ph / Fax: (03) 5968 4205

e: emerald@cellarbrations.com.au



**MONBULK
EMERALD**

FAMILY DENTAL CARE

Emerald 5968 5736
341 Belgrave Gembrook Rd, Emerald
efdc@monbulkemerald dentist.com.au

Monbulk 9752 0177
U8 37-39 Main Rd, Monbulk
mfdc@monbulkemerald dentist.com.au

Services offered:

Clinical/Studio Pilates - Private sessions/Group bookings
Reformer Pilates - Barre Pilates - Mat Pilates
Government Accredited Pilates teacher training
All teachers Tertiary Qualified and experienced.



Shop 5 & 8, 5-7 Kilvington Drive, Emerald Vic 3782
0407 049 478

EMERALD PILATES

WAXING - BROWS - TANNING - FACIALS

HUSH

BEAUTY & SKIN

2/11 Kilvington Drive, Emerald Vic. 3782
03 5968 4463
hushcosmetics@gmail.com

FLAVOUR
Bomb

Asian Fusion Cafe in the heart of Emerald Vic. Same, same but so different!
4/329 Belgrave-Gembrook Road, Emerald, VIC, Australia, Victoria 03 5968 3461

FERNLEA COMMUNITY CARE

EMERALD AND PAKENHAM

DAY RESPITE &
IN HOME SERVICES

supports our local community and helps people to find something
good in each and every day



SHOP OF OPPORTUNITIES

15 Kilvington Drive Emerald

OPEN MONDAY TO FRIDAY

www.fernlea.com.au | 03 5968 6639

Professional Arborists
1800 670 468
office@treerangearborists.com.au
www.treerangearborists.com.au

TREE RANGE
ARBORISTS

291-295 Belgrave-Gembrook Road, Emerald Vic. 3782



Darren Gavin
Owner/Manager

297 Belgrave- Gembrook Road
Emerald 3782

info@emcarautomotive.com

5968 6031

Supported by



Cardinia

Cardinia Shire Council

THE EMERALD VILLAGE ASSOCIATION INC. IS PLEASED TO ANNOUNCE TWO "PLATINUM" CLASS SPONSORS -
THE EMERALD & DISTRICT CO-OPERATIVE SOCIETY AND THE BENDIGO BANK.

WITH THEIR FINANCIAL ASSISTANCE THE EVA HAS BEEN ABLE TO PURCHASE A STATE OF THE ART PRINTER TO
ENABLE IT TO PRESENT A QUALITY BOOKLET NEWSLETTER TO EMERALD AND TO PROVIDE A PRINTING
FACILITY FOR THE BUSINESS AND COMMUNITY GROUPS OF THE DISTRICT.

The Bendigo Bank

Time for a home loan health check!

With interest rates on the rise, there's never been a better time to review your home loan.

We'll look at your rate, term, repayments, and equity, giving your loan a full check-up to make sure it's still right for you and your current needs.

Enquire online at bendigobank.com.au/healthcheck or call your nearest branch on 5968 8831.

 visit us in Cockatoo or call 5968 8831 for an appointment





*Roy Morgan Single Source (Australia), December 2022. All loans are subject to the bank's normal lending criteria. Fees, charges, terms and conditions apply. Please consider your situation and read the Terms and Conditions, available online at www.bendigobank.com.au or upon request from any Bendigo Bank branch, before making a decision. Bendigo and Adelaide Bank Limited ABN 11 068 049 178 AFSL 237879 (1676698-1734981) (05/22) OUT_30181148, 27/06/2023

The Emerald Co-Operative Society

